



Blackmore Road Melksham SN12 7HT

- Two spacious bedrooms
 - Good size garden
- Walking distance to shop
 - Good size outbuilding
- Parking for 3-4 vehicles
- Garage with electric door
 - Bus stop nearby
- Chalet style bungalow

£240,000 Freehold



Porch

External door to front, window to front and side elevations and door to hallway.

Hallway

Window to front elevation, storage cupboard, radiator, stairs to first floor and doors to lounge/diner and bathroom.

Lounge/Diner

21'1" x 10'6"

Window to front elevation, radiator, patio door to rear garden and door to kitchen.

Kitchen

9'5" x 10'1"

Fitted with a matching range of base and eye level units with worktop space over, 1+1/2 bowl stainless steel sink, built-in dishwasher, washing machine and microwave, space for fridge/freezer, built-in oven and five ring gas hob, window to rear elevation and external door to side.



Bathroom

Fitted with a three piece suite comprising shower enclosure, wash hand basin and WC, underfloor heating, window to side elevation, storage cupboard and heated towel rail.

Landing

Window to rear elevation and doors to bedrooms.

Bedroom One

13'11" x 10'6"

Window to rear elevation and storage area in eaves.

Bedroom Two

13'11" x 6'11"

Window to rear elevation and storage cupboard in eaves.

Outside

Driveway parking for approximately three to four vehicles, garage, enclosed rear garden with side access and outbuilding usable as living accommodation including kitchenette and WC.

Garage

Electric roller garage door, light and power.

Open Plan Living

10'10" x 12'7"

External door, fitted with a matching

range of base and eye level units with worktop space over, stainless steel sink, space for fridge and double doors to garden.

Bedroom

10'10" x 9'10"

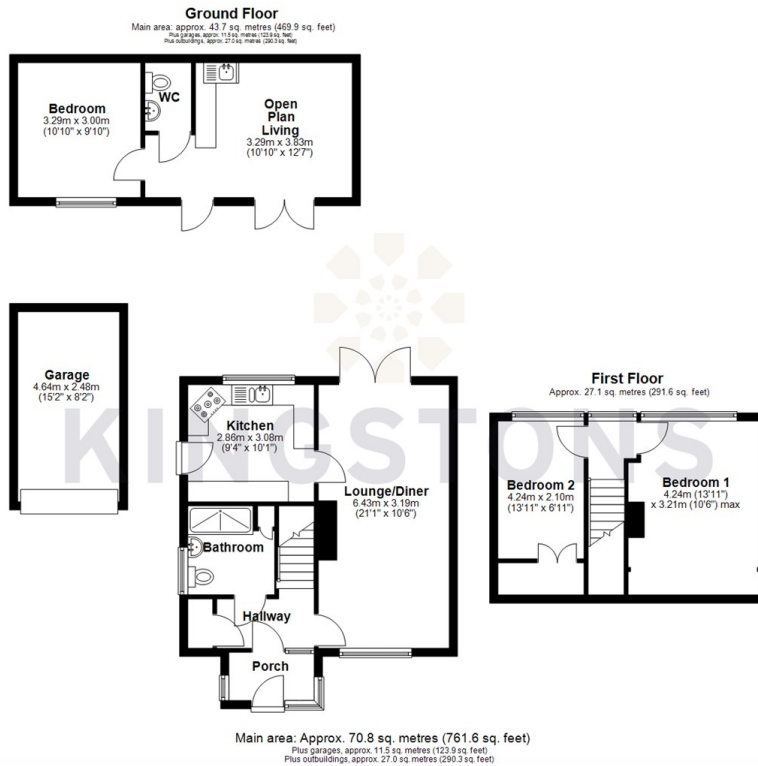
Window to front elevation.

WC

Fitted with two piece suite comprising wash hand basin and WC.



Local Authority **Wiltshire**
 Council Tax Band **B**
 EPC Rating **E**




KINGSTONS
 Melksham Office

11 High Street, Melksham,
 Wiltshire, SN12 6JR

Contact

01225709115
 sales@kingstons.biz
 www.kingstons.biz

Agents Note: Whilst every care has been taken to prepare these particulars, they are for guidance purposes only. All measurements are approximate and for general guidance purposes only and whilst every care has been taken to ensure accuracy, they should not be relied upon and potential buyers/tenants are advised to recheck the measurements.